

# 640-911

## DCICN Introducing Cisco Data Center Networking

Version: Demo



## About Exambible

### *Your Partner of IT Exam*

## Found in 1998

Exambible is a company specialized on providing high quality IT exam practice study materials, especially Cisco CCNA, CCDA, CCNP, CCIE, Checkpoint CCSE, CompTIA A+, Network+ certification practice exams and so on. We guarantee that the candidates will not only pass any IT exam at the first attempt but also get profound understanding about the certificates they have got. There are so many alike companies in this industry, however, Exambible has its unique advantages that other companies could not achieve.

## Our Advances

### \* 99.9% Uptime

All examinations will be up to date.

### \* 24/7 Quality Support

We will provide service round the clock.

### \* 100% Pass Rate

Our guarantee that you will pass the exam.

### \* Unique Gurantee

If you do not pass the exam at the first time, we will not only arrange FULL REFUND for you, but also provide you another exam of your claim, ABSOLUTELY FREE!

1. What does RIPv1 send to its neighbors?

- A. Information about changed routes
- B. Information about new routes
- C. The entire routing table
- D. Information about deleted routes

**Answer: C**

Explanation:

"On receiving the Routing table, the router processes each entry of the routing table as per the following rules"

[http://en.wikipedia.org/wiki/Routing\\_Information\\_Protocol](http://en.wikipedia.org/wiki/Routing_Information_Protocol)

2. Which action will a router take if it does not know the destination MAC address of a host?

- A. Flood the packet out of every port.
- B. Drop the packet.
- C. Send an ARP request.
- D. Send a proxy ARP request.
- E. Send an ICMP unreachable message back to the source.

**Answer: C**

3. Which two statements describe two benefits of a star topology compared to a mesh topology? (Choose two.)

- A. New stations can be added quickly and easily.
- B. Troubleshooting connectivity is easier.
- C. There is not a single point of failure.
- D. A single cable failure will not bring down the entire network.
- E. It has the absolute least likelihood of having a collision

**Answer: A,B**

4. Which two networking devices operate at Layer 1 of the OSI model? (Choose two.)

- A. Repeater
- B. Bridge
- C. Switch
- D. Router
- E. Hub

**Answer:** A,E

Explanation:

It defines the electrical and physical specifications of the data connection. It defines the relationship between a device and a physical transmission medium (e.g. a copper or fiber optical cable). This includes the layout of pins, voltages, line impedance, cable specifications, signal timing, hubs, repeaters, network adapters, host bus adapters (HBA used in storage area networks) and more."

[http://en.wikipedia.org/wiki/OSI\\_model](http://en.wikipedia.org/wiki/OSI_model)

5. Unlike IPv6, which feature is available only in IPv4?

- A. broadcast
- B. anycast
- C. multicast
- D. unicast

**Answer:** A

6. VLAN 10 is assigned IP address 10.1.1.1 with subnet mask 255.255.255.0. Which configuration is used to route the IP subnet but not form OSPF neighbors on a Cisco Nexus 7000 switch?

- A)

```
feature ospf
!  
interface Vlan10  
ip address 10.1.1.1/24  
no shutdown  
ip router ospf 1  
ip passive-interface ospf 1  
!  
router ospf 1
```

B)

```
feature ospf
!  
interface Vlan10  
ip address 10.1.1.1/24  
no shutdown  
!  
router ospf 1  
passive-interface default  
no ip passive-interface Vlan10
```

C)

```
feature ospf
!  
interface Vlan10  
ip address 10.1.1.1/24  
no shutdown  
!  
router ospf 1  
ip passive-interface Vlan10
```

D)

```
feature ospf
!  
interface Vlan10  
ip address 10.1.1.1/24  
no shutdown  
ip router ospf 1  
!  
router ospf 1
```

- A. Option A
- B. Option B
- C. Option C
- D. Option D

**Answer:** A

7. Which two layers of the OSI model are combined in the Internet protocol suite network access layer?  
(Choose two.)

- A. 1
- B. 2
- C. 3
- D. 4
- E. 5
- F. 6
- G. 7

**Answer::** A,B

Explanation:

[http://en.wikipedia.org/wiki/Internet\\_protocol\\_suite](http://en.wikipedia.org/wiki/Internet_protocol_suite)

8. What is the dotted hexadecimal representation of the IP address 172.13.99.225?

- A. AC.0D.63.E1

- B. AB.63.99.D5
- C. E2.1D.E1.66
- D. BC.0C.C3.1F
- E. CC.0D.F3.21

**Answer: A**

9. What TCP/IP layer would handle UDP traffic flows?

- A. internetwork
- B. network interface
- C. transport
- D. physical

**Answer: C**

10. In an IPv6 address, how many bits are used for the interface identifier?

- A. 48
- B. 16
- C. 64
- D. 128
- E. 10

**Answer: C**

11. What is the command sequence to force a Cisco Nexus 6000 switch to boot using the golden BIOS image?

- A. Press Ctrl-Shift-6 within 30 seconds of when power is supplied to the switch.
- B. Press Ctrl-] within 2 seconds of when power is supplied to the switch.
- C. Press Ctrl-] within 30 seconds of when power is supplied to the switch.
- D. Press Ctrl-Shift-6 within 2 seconds of when power is supplied to the switch.

**Answer: D**

12. Which two network topologies are the most popular in switching? (Choose two.)

- A. Bus
- B. Token passing bus
- C. Star
- D. Extended star
- E. Ring

**Answer:** C,D

Explanation:

[http://en.wikipedia.org/wiki/Network\\_topology](http://en.wikipedia.org/wiki/Network_topology)

13. What is the function of the Tab key on the Cisco Nexus Operating System command-line interface?

- A. redisplays the current command line
- B. deletes all characters from the cursor to the end of the command line
- C. clears the terminal screen
- D. completes a partially entered command if enough characters are present
- E. moves the cursor one word to the right

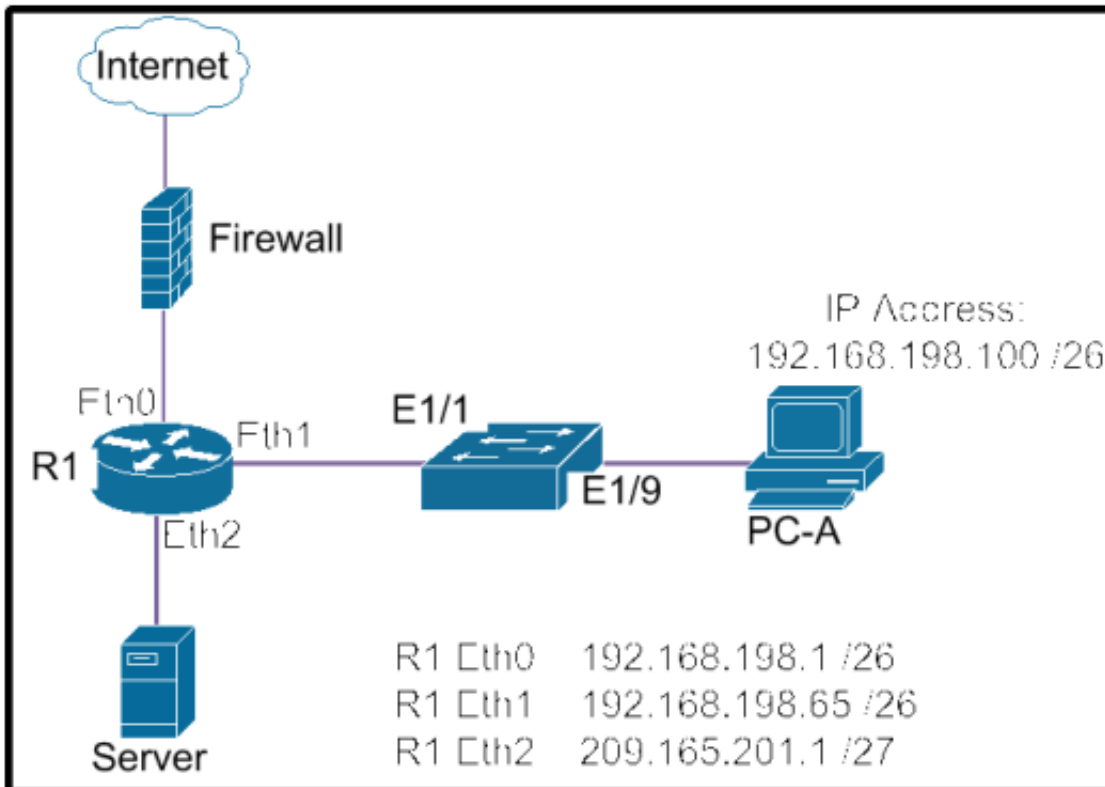
**Answer:** D

Explanation:

"Completes the word for you after entering the first characters of the word, and then pressing the Tab key. All options that match are presented." [http://www.cisco.com/en/US/docs/switches/datacenter/sw/4\\_1/nx-os/fundamentals/configuration/guide/Cisco\\_Nexus\\_7000\\_Series\\_NX-OS\\_Fundamentals\\_Configuration\\_Guide\\_Release\\_4.1\\_chapter4.html](http://www.cisco.com/en/US/docs/switches/datacenter/sw/4_1/nx-os/fundamentals/configuration/guide/Cisco_Nexus_7000_Series_NX-OS_Fundamentals_Configuration_Guide_Release_4.1_chapter4.html)

14. Refer to the exhibit. What two destination addresses will be in the packet and frame header generated at PC-A for traffic going to the Server? (Choose two.)





- A. IP address of the Server
- B. MAC address of router interface eth1
- C. IP address of router interface Eth1
- D. MAC address of the Server
- E. IP address of switch interface E1/9
- F. MAC address of switch interface E1/9

**Answer:** A,B

15. Which version of Cisco Nexus Operating System became a common operating system for Cisco Nexus switches and Cisco MDS storage switches?

- A. 2.7
- B. 3.3
- C. 3.9
- D. 4.1
- E. 5.01GD
- F. 6.2

**Answer: D**

Explanation:

"While many of the changes leading to convergence are product releases and features, others are more symbolic. One of these symbolic changes is the rebranding, of Cisco® MDS 9000 SAN-OS Software as Cisco MDS 9000 NX-OS® Software effective with Release 4.1."

[http://www.cisco.com/en/US/prod/collateral/ps4159/ps6409/ps5989/ps9898/Rebranding\\_MDS\\_9000.html](http://www.cisco.com/en/US/prod/collateral/ps4159/ps6409/ps5989/ps9898/Rebranding_MDS_9000.html)

16. Which command should you use to configure a Cisco Nexus switch port for Layer 2 operation?

- A. `nexus(config-if)#switchport`
- B. `nexus(config-if)#layer-2`
- C. `nexus(config-if)#routed`
- D. `nexus(config)#interface vlan 10nexus(config-if)#switchport`

**Answer: A**

Explanation:

"If you want to configure a Layer 3 interface for Layer 2, enter the `switchport` command. Then, if you change a Layer 2 interface to a routed interface, enter the `no switchport` command."

[http://www.cisco.com/en/US/docs/switches/datacenter/nexus5000/sw/command/reference/layer2/n5kl2\\_cmds\\_n.pdf](http://www.cisco.com/en/US/docs/switches/datacenter/nexus5000/sw/command/reference/layer2/n5kl2_cmds_n.pdf)

17. Which two options describe services that are provided by UDP? (Choose two.)

- A. session multiplexing
- B. segmentation
- C. connection-oriented
- D. reliable packet delivery
- E. best-effort packet delivery

**Answer: A,E**

Explanation:

"UDP is faster because there is no error-checking for packets."

[http://www.differ.com/difference/TCP\\_vs\\_UDP](http://www.differ.com/difference/TCP_vs_UDP)

18. A network engineer is verifying Layer 2 connectivity of a server to a Cisco Nexus switch by checking Address Resolution Protocol table statistics. Which command shows the MAC address, physical interface,

VLAN, and IP address of a server on a Cisco Nexus switch?

- A. show ip arp detail
- B. show ip arp
- C. show ip arp interface
- D. show arp detail

**Answer: A**

19. There is a large amount of traffic inside a network segment with a destination address of FF:FF:FF:FF:FF:FF. What type of traffic uses this address?

- A. FF:FF:FF:FF:FF:FF is the Layer 2 broadcast address.
- B. FF:FF:FF:FF:FF:FF is the Layer 2 network address.
- C. FF:FF:FF:FF:FF:FF is the Layer 3 broadcast address.
- D. FF:FF:FF:FF:FF:FF is the Layer 3 network address.
- E. FF:FF:FF:FF:FF:FF is multicast traffic.

**Answer: A**

20. Which command can change the sequence of a router boot process?

- A. config-register
- B. configuration-register
- C. conf-register
- D. config-registration

**Answer: A**



## Relate Links

**100% Pass Your 640-911 Exam with Exambible Prep Materials**

<http://www.exambible.com/640-911-exam/>

## Contact us

**We are proud of our high-quality customer service, which serves you around the clock 24/7.**

**Viste - <http://www.exambible.com/>**