

98-365

Windows Server Administration Fundamentals

Version: Demo



About Exambible

Your Partner of IT Exam

Found in 1998

Exambible is a company specialized on providing high quality IT exam practice study materials, especially Cisco CCNA, CCDA, CCNP, CCIE, Checkpoint CCSE, CompTIA A+, Network+ certification practice exams and so on. We guarantee that the candidates will not only pass any IT exam at the first attempt but also get profound understanding about the certificates they have got. There are so many alike companies in this industry, however, Exambible has its unique advantages that other companies could not achieve.

Our Advances

* 99.9% Uptime

All examinations will be up to date.

* 24/7 Quality Support

We will provide service round the clock.

* 100% Pass Rate

Our guarantee that you will pass the exam.

* Unique Gurantee

If you do not pass the exam at the first time, we will not only arrange FULL REFUND for you, but also provide you another exam of your claim, ABSOLUTELY FREE!

1. Distributed File System (DFS) is used to:

- A. Delegate permissions to a global distribution group.
- B. Implement parity.
- C. Group shared folders from different servers.
- D. Configure spanned and extended volumes.

Answer: C

Explanation: Distributed File System (DFS) is a set of client and server services that allow an organization using Microsoft Windows servers to organize many distributed SMB file shares into a distributed file system. DFS provides location transparency and redundancy to improve data availability in the face of failure or heavy load by allowing shares in multiple different locations to be logically grouped under one folder, or DFS root.

2. This question requires that you evaluate the underlined text to determine if it is correct.

The minimum permission needed to delete other users' documents from a print queue is "Print".

Select the correct answer if the underlined text does not make the statement correct. Select 'No change is needed' if the underlined text makes the statement correct.

- A. Manage Documents
- B. Manage Printers
- C. Deny
- D. No change is needed

Answer: A

Explanation: Manage documents. If you have this permission, you can manage all jobs for a printer that are waiting in the print queue, including documents or files that are being printed by other users.

Incorrect:

Not D: With print permissions you can only delete your own documents.

Reference: <http://windows.microsoft.com/en-us/windows-vista/what-are-printer-permissions>

3. Which is an advantage of 64-bit operating systems over 32-bit operating systems?

- A. Larger amounts of accessible RAM
- B. More device drivers
- C. More compatible applications

D. Cheaper hardware

Answer: A

Explanation: Can access a larger address space.

4. The manager at the coffee house where you work asks for advice on adding storage to the store's server to perform backups.

The additional storage must meet the following requirements:

Hold at least 600 GB

Be reasonably priced

Be reasonably fast

Which solution should you recommend?

A. USB hard drive

B. USB flash drive

C. SCSI tape backup system

D. External SCSI hard drive

Answer: C

5. Which two firmware platforms does the Boot Configuration Data store support? (Choose two.)

A. UEFI

B. RAID

C. eSATA

D. BIOS

Answer: A,D

Explanation: On EFI-based operating systems, the BCD registry file is located in the \EFI\Microsoft\Boot\ folder on the EFI system partition.

On BIOS-based operating systems, the BCD registry file is located at \Boot\Bcd on the active partition.

Incorrect:

RAID and eSATA are not firmware platforms.

Reference: <http://sourcedaddy.com/windows-7/boot-configuration-data.html>

6. You need to manage a Windows Server 2008 server from a Windows client computer by using a Management Console.

What should you install on the client computer?

- A. Remote Assistance
- B. Remote Server Administration Tools
- C. Windows Server Resource Kit
- D. Microsoft Office SharePoint Server

Answer: B

Explanation: Example: Remote Server Administration Tools for Windows 8.1 enables IT administrators to manage roles and features that are installed on computers that are running Windows Server 2012 or Windows Server 2012 R2 from a remote computer that is running Windows 8.1 Pro or Windows 8.1 Enterprise.

7. Which type of folder permissions takes precedence?

- A. Explicit Deny permissions
- B. Explicit Allow permissions
- C. Inherited Deny permissions
- D. Inherited Allow permissions

Answer: A

Explanation: Here are some rules for resolving permissions conflicts:

"Deny" permissions generally take precedence over "allow" permissions.

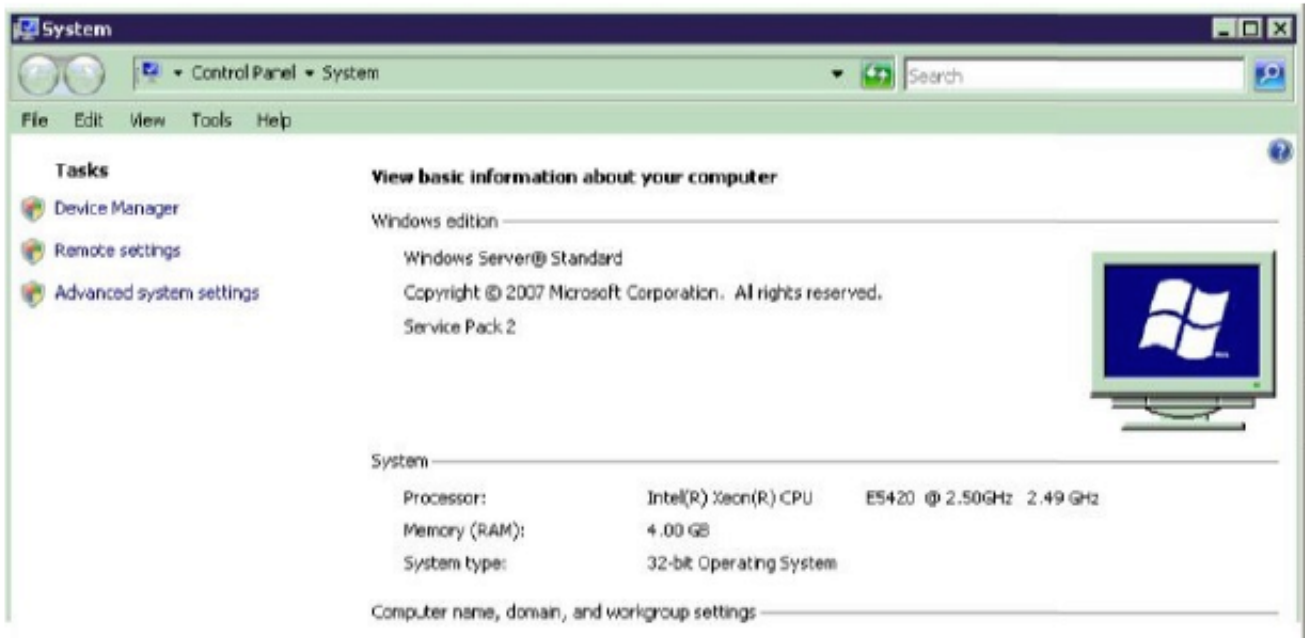
Permissions applied directly to an object (explicit permissions) take precedence over permissions inherited from a parent (for example from a group).

Permissions inherited from near relatives take precedence over permissions inherited from distant predecessors. So permissions inherited from the object's parent folder take precedence over permissions inherited from the object's "grandparent" folder, and so on.

Permissions from different user groups that are at the same level (in terms of being directly-set or inherited, and in terms of being "deny" or "allow") are cumulative. So if a user is a member of two groups, one of which has an "allow" permission of "Read" and the other has an "allow" of "Write", the user will have both read and write permission--depending on the other rules above, of course.

8. You work for Adventure Works Cycles. Your manager asks you if a memory upgrade would help the office's server run faster.

The server runs Windows Server 2008 Standard. The server's System Settings are shown in the exhibit. (Click the Exhibit button.)



What should you tell your manager?

- A. Adding memory will not help because Windows Server 2008 Standard never needs more than 4 GB of memory.
- B. Adding memory will help; this system can use up to 32 GB of memory.
- C. Adding memory will help; this system can use up to 16 GB of memory.
- D. Adding memory will not help because a 32-bit system cannot use more than 4 GB of memory.

Answer: D

Explanation: A 32-bit operating system cannot use more than 4 GB of RAM.

9. Which RAID level can consist of two disks and provides redundancy?

- A. RAID 0
- B. RAID 1
- C. RAID 5
- D. RAID 10

Answer: B

10. For each of the following statements, select Yes if the statement is true. Otherwise, select No. Each correct selection is worth one point.

Answer Area

	Yes	No
Active Directory groups can be used to assign permissions on a shared folder on a member server.	<input type="radio"/>	<input type="radio"/>
Active Directory groups can be linked to Active Directory group policies.	<input type="radio"/>	<input type="radio"/>
Local groups on a member server can be members of global groups in a domain.	<input type="radio"/>	<input type="radio"/>

Answer:

Answer Area

	Yes	No
Active Directory groups can be used to assign permissions on a shared folder on a member server.	<input checked="" type="radio"/>	<input type="radio"/>
Active Directory groups can be linked to Active Directory group policies.	<input checked="" type="radio"/>	<input type="radio"/>
Local groups on a member server can be members of global groups in a domain.	<input type="radio"/>	<input checked="" type="radio"/>

11. Match each troubleshooting utility to its description. (To answer, drag the appropriate utility from the column on the left to its description on the right. Each utility may be used once, more than once, or not at all. Each correct match is worth one point.)

Utilities	Answer Area	
tracert	Displays all active network configuration values for that device	Utility
ping	Determines the path taken to a destination by sending an ICMP echo request	Utility
netstat	Verifies IP connectivity with another device by sending an ICMP echo request	Utility
ipconfig	Shows active TCP connections and ports that the computer is listening to	Utility

Answer:

Utilities	Answer Area	
tracert	Displays all active network configuration values for that device	ipconfig
ping	Determines the path taken to a destination by sending an ICMP echo request	tracert
netstat	Verifies IP connectivity with another device by sending an ICMP echo request	ping
ipconfig	Shows active TCP connections and ports that the computer is listening to	netstat

12. A domain controller that is designated to perform a set of specialized domain controller tasks is commonly referred to as a/an:

A. Windows Internet Name Service (WINS) server

- B. Operations Master
- C. Organizational Unit
- D. Primary domain controller

Answer: B

Explanation: Operations Master Roles

The five operations master roles are assigned automatically when the first domain controller in a given domain is created.

13. By default, which group can create and link Group Policy Objects?

- A. Authenticated Users
- B. Domain Users
- C. Domain Administrators
- D. Local Administrators

Answer: C

Explanation: The Domain Administrators are the only people who can create GPOs by default.

14. Which technology is designed to host calendars, contacts, and e-mail on the server?

- A. Microsoft Host Integration Server
- B. Microsoft Expression Studio
- C. Microsoft SQL Server
- D. Microsoft Exchange Server

Answer: D

15. You are an IT intern for Tailspin Toys.

Your manager attends a conference out of town and wants you to perform routine maintenance directly on a Windows 2008 R2 server console.

Because you have restricted access, you need your manager to enter credentials at a UAC prompt in your session.

What should you do?

- A. Have your manager use Server Manager to connect to the server.
- B. Have your manager use Remote Administration to connect to the server.
- C. Send a Remote Assistance request to your manager.
- D. Have your manager use Remote Desktop to connect to the server.

Answer: C

Explanation: With Remote Assistance the manager can take control of your computer and enter the password.

Note: Remote Assistance enables a trusted person (a friend, support person, or IT administrator) to remotely and actively assist someone with a computer problem. The helper (also called an expert) can view the screen of the user requesting assistance and offer advice. With the permission of the user, the helper can take control of the user's computer and perform tasks remotely.

Reference: Administering Remote Assistance

<https://technet.microsoft.com/en-us/library/bb456978.aspx>

16. You need to make a share hidden. Which symbol should you append to the share name?

- A. _
- B. !
- C. @
- D. #
- E. \$

Answer: E

Explanation: The "\$" appended to the end of the share name means that it is a hidden share. Windows will not list such shares among those it defines in typical queries by remote clients to obtain the list of shares. One needs to know the name of an administrative share in order to access it. Not every hidden share is administrative share; in other words, ordinary hidden shares may be created at user's discretion.

17. You enable Remote Desktop. Which group will be granted access by default?

- A. Domain users group
- B. Remote access security group
- C. Local administrators group
- D. Local users group

Answer: C

Explanation: Configure Remote Desktop Access on Windows 7 Systems

Remote Desktop is not enabled by default. You must specifically enable it to allow remote access to the workstation. When it is enabled, any member of the [local] Administrators group can connect to the workstation. Other users must be placed on a remote access list to gain access to the workstation.

18. What is required to create a volume mount point?

- A. A dynamic disk
- B. RAID 1 implementation
- C. An NTFS file system volume or partition
- D. Extended volumes

Answer: C

Explanation: A volume mount point can be placed in any empty folder of the host NTFS volume.

19. Which technology is used to create and manage relational databases?

- A. Microsoft Exchange Server
- B. Microsoft Commerce Server
- C. Microsoft Groove Server
- D. Microsoft SQL Server

Answer: D

Explanation: SQL Server databases are relational.

20. You need to install a driver. Where should you get the driver?

- A. The Task Manager
- B. The device manufacturer
- C. The system firmware
- D. The Hardware Compatibility List

Answer: B

Explanation: The device manufacturer should provide a driver.





Relate Links

100% Pass Your 98-365 Exam with Exambible Prep Materials

<http://www.exambible.com/98-365-exam/>

Contact us

We are proud of our high-quality customer service, which serves you around the clock 24/7.

Viste - <http://www.exambible.com/>